

**Extract the Power of Precision
Shade Technology...**

With the SpectroShade system, you can...

- Eliminate all shade taking variables
- Transfer images quickly via e-mail or CD-ROM
- Flip and rotate images
- Validate whitening changes both numerical and visually
- Measure precise tooth size
- Magnify and highlight tooth characteristics
- Display full face and mouth images
- Use the intra-oral camera for procedures within the mouth
- Present alternative shade readings for optimum shade matching capability
- Compare images with manufacturer or personalized shade standards

The results for you and your practice are significant:

- Increase your profitability by eliminating time-consuming and expensive remakes
- Enhance your professional image and practice with groundbreaking procedures and technologies
- Reinforce your professional commitment to complete patient satisfaction and convenience

...SpectroShade is the State-of-the-Art System for Greater Patient Satisfaction and Practice Profitability

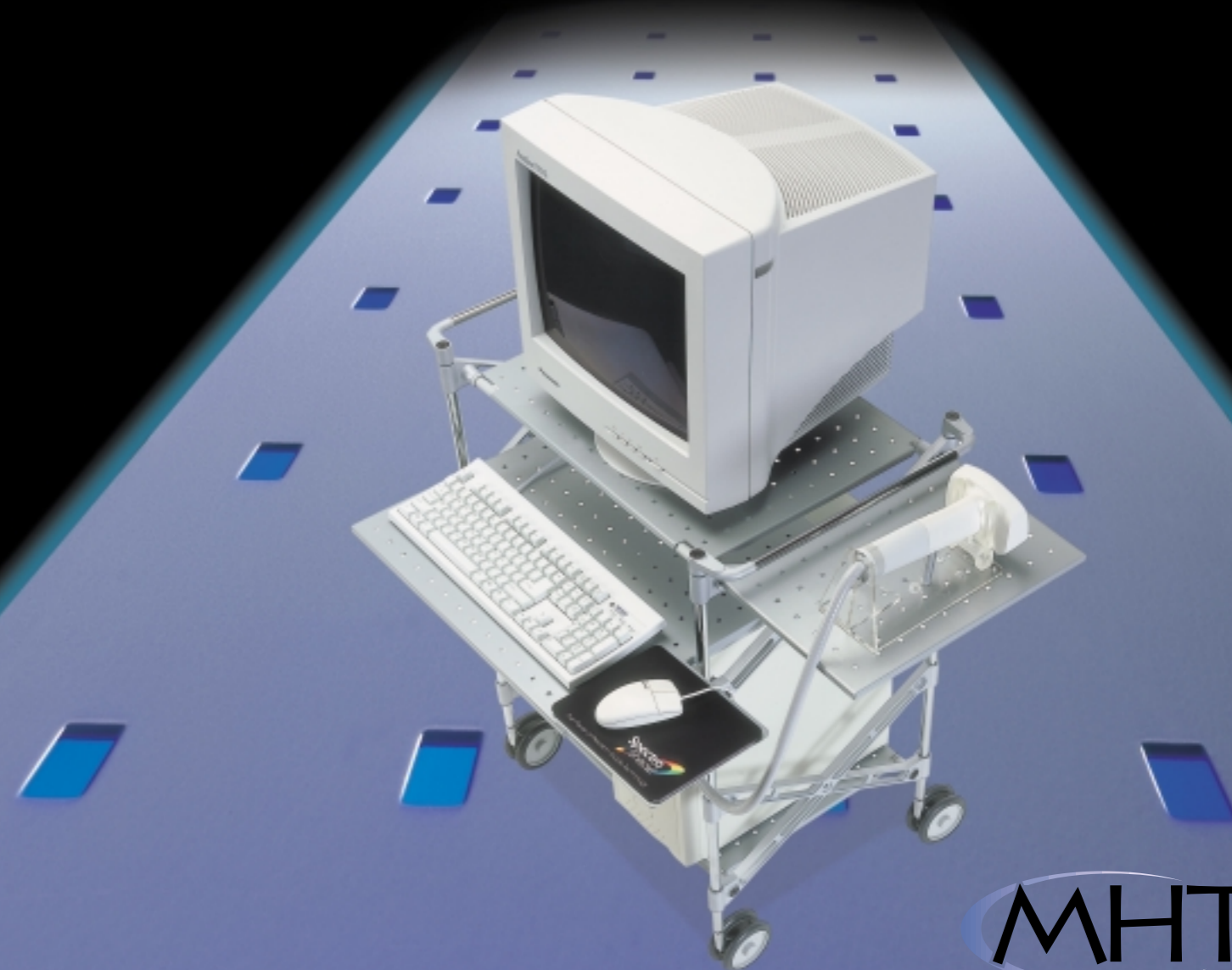
For more information on SpectroShade contact MHT International at **1-866-MHT-SPEC** (1-866-648-7732) or visit our website at **www.mhtint.com**

SpectroShade is a trademark of MHT International.
©2000 MHT International. All rights reserved. 10/00

MHT International • 12 Penns Trail, Suite 110 • Newtown, PA 18940



The Power of Precision Shade Technology





*The patented Windows-based SpectroShade™ system combines dual digital cameras that are linked through optic fibers to a fully-functioning spectrophotometer. Therefore, SpectroShade can accurately and consistently measure natural dentition against virtually any restorative material or shading system utilizing the industry standard of measurement, L*C*h* values (lightness, chroma and hue). In addition, SpectroShade allows you to easily take images that are uninfluenced by office lighting and other conditions that can affect a visual determination. The advantage to your practice: 100% accuracy to eliminate time consuming and costly remakes.*

SpectroShade differs from any other shade taking device. One significant difference is its multi-functional capability. And, SpectroShade provides you with two additional cameras: One for full face and smile images with the second transforming the optic handpiece into a fully functioning intra-oral camera – eliminating the need for additional equipment.



Visual Perception of Color is a Subjective Experience

What one person sees isn't always the same as what another person sees. When white light falls on a tooth, one or more colors are reflected. Your perception of color – the reflection of light you see – is influenced by a variety of factors, such as room lighting, time of day, and other background reflections. Which is why those navy blue socks we thought we put on early in the morning turn out to be black in the mid-afternoon daylight.

So it's not surprising that the visual shade assessment of natural dentition is difficult to match for crown and bridge restorations.

But now shade matching doesn't have to contain any surprises.

What SpectroShade "Sees" is What You Get

SpectroShade "reads" the colors of the tooth to determine the closest shade standard available for the restoration. Providing the numerical difference between the natural tooth and the selected shade standard in terms of the lightness, chroma and hue – giving your laboratory the information they need to fabricate a perfect match. SpectroShade can analyze the overall shade of the tooth as a starting point, then map specific areas on the tooth such as the gingival, dentin and incisal areas. Shade results can be displayed in either a text or graph format, as well as plotting the shade on the complete color spectrum.

Makes Communication Easy and Accurate

SpectroShade provides a number of powerful features that allow you to manipulate images in several ways. You can magnify and highlight, flip and rotate images, and even measure precise tooth size.

An additional SpectroShade feature is its unique ability to synchronize two images, such as before and after restorative work as well as bleaching treatments. And with the handy

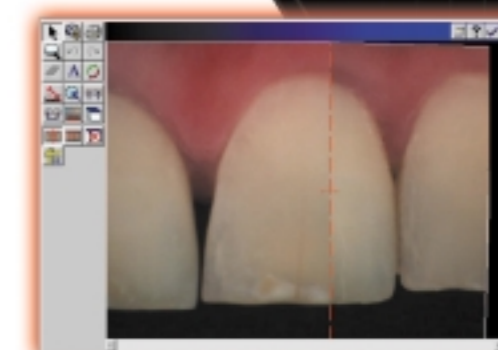
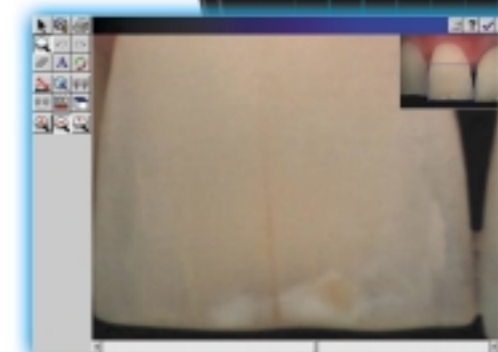
split screen feature, you can accurately track the process to achieve optimum results.

All patient files, images and spectral data can be conveniently stored on your SpectroShade hard drive – instantly accessible and printable on demand. If you have an Internet connection, you can quickly transfer data from your office directly to the lab. If not, you can easily transfer the information directly to a CD-ROM which can be sent to your SpectroShade lab with the impression.

Operates Like a Fine Swiss Watch...

SpectroShade is currently undergoing testing in numerous laboratories and doctors' offices throughout North America. It is manufactured in state-of-the-art facilities in Switzerland, a country internationally noted for its engineering precision and elegance. Yet such a comprehensive, one-of-a-kind system is affordably priced.

Every remake impacts your profitability. Accurate, consistent, spectral shade data coupled with improved communication between you and your laboratory elevates your practice to a new standard of excellence.



Results- Choose between automatic mapping to view shade results of the whole tooth, three parts or multiple shade areas; or manual mapping for analyzing specific areas. Read the shade match results and compare the numerical difference between the image and the shade standard in terms of lightness, chroma and hue.

Magnify- Zoom in or out from the original image as well as view a representation of the whole tooth and the specific area.

Measure- Analyze the length or width of a tooth to a hundredth of a millimeter – especially useful in terms of crown lengthening.

Vertical Split- Take two synchronized images combining them both into one image – extremely useful in tracking whitening changes or comparing natural teeth to crowns.